

**felt[®]
Art**

**FOR
ACOUSTIC
LIVING**



MOUNTING INSTRUCTIONS

© Feltart
www.feltart.com/mountingset

MOUNTING

Select your option based on the criteria below

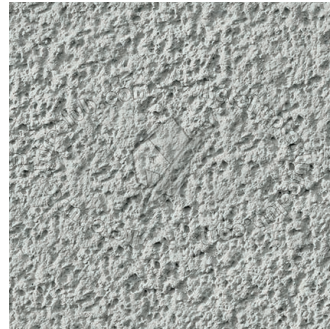


SCREW

PAGE 1 T/M 6

- On rough wall surfaces
- When exposed to extreme heat
- **Recommended for size L**

ROUGH WALL SURFACE



TAPE

PAGE 7 T/M 11

- On smooth wall surfaces
- Easy installation
- Recommended for size S and M
- **Optional for size L**

SMOOTH WALL SURFACE



SCREW



- On rough wall surfaces
- When exposed to extreme heat
- **Recommended for size L (70x110 cm)**



1



Thank you for buying FeltArt



Let's start by unboxing your new Wall Art

3



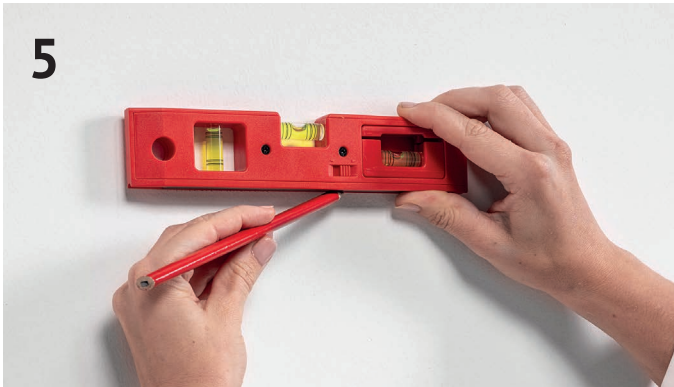
Enclosed with your Wall Art are double sided tape, screws and plugs

4



These extra items are needed for mounting your Wall Art

5



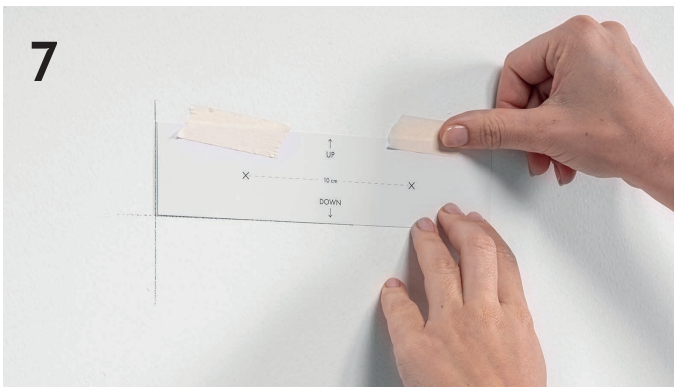
To position the hanging system first draw a horizontal line on the wall

6



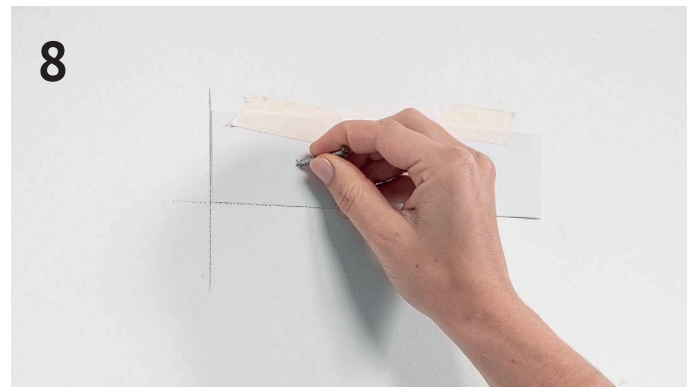
Then draw a vertical line crossing the horizontal line to mark your starting point

7

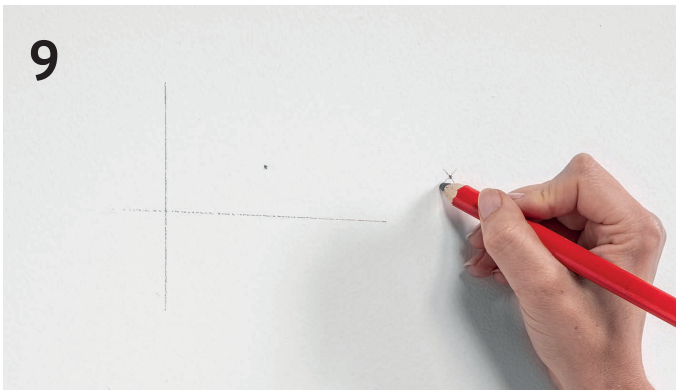


Position the enclosed paper drill template and tape it to the wall

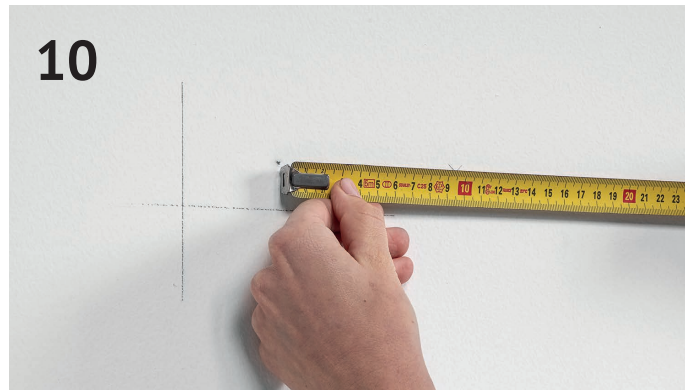
8



Mark the 2 drilling points (X) by pressing a screw firmly through the paper



9
Use a pencil to mark the first drilling point on the wall



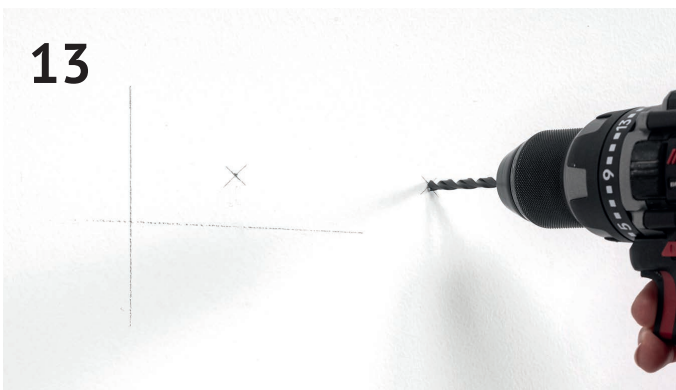
10
Measure a distance of 10 centimeters for the second drilling point



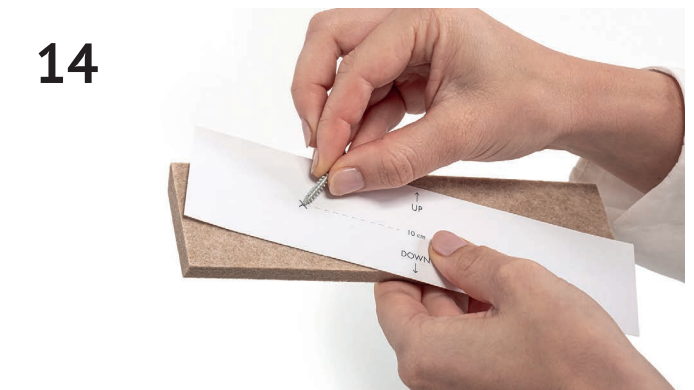
11
Now mark the second drilling point on the wall



12
Double check if the distance between the two drilling points is 10 centimeter



13
Drill the holes and install the 2 plugs



14
Position the paper drill template on the felt spacer



15
Mark the 2 drilling points (X) by pressing a screw firmly through the paper



16
Use a marker to mark the drilling points on the felt spacer

17



Screw in the first screw to mount the felt spacer on the wall

18



Position the felt spacer using a spirit level and screw in the second screw

19



Now let's start positioning the felt spacers on the back of the Wall Art

20



Mark a dot 10 centimeter from the upper edge on the right side

21



Position your tape measure on the left side

22



Mark a dot 10 centimeter from the upper edge on the left side

23



Now position your tape measure level with the two marked dots

24



Mark the right position depending on size of the art work S/M/L (for details check the data sheet)



25 Mark the left position depending on size of the art work S/M/L (for details check the data sheet)



26 Check if the distance between the marked points is 20 centimeter (size of the felt spacer)



27 Option 1: Use an adhesive (continue from step 33)



28 Option 2: Use double sided tape (enclosed sheets) **Check the data sheet first**



29 Position the double sided tape to the back of the felt spacer



30 Press firmly to stick the double sided tape to the felt spacer



31 Keep pressing firmly for a few seconds to create a super strong bonding (!)



32 Remove the sheet from the double sided tape



33
Place the felt spacer between the marked points and press firmly



34
Keep pressing firmly for a few seconds for a super strong bonding (!)



35
Repeat steps 20-34 to mount all felt spacers to the art work



36
Your FeltArt is now ready to hang on the wall, you can rotate and place in any position!



**FOR MORE TECHNICAL DETAILS AND MOUNTING TIPS
CHECK THE DATA SHEET ON OUR WEBSITE**

www.feltart.com/mountingset



TAPE

- On smooth wall surfaces
- Easy installation
- Recommended for size S and M
- **Optional for size L**



© Feltart

www.feltart.com/mountingset

1



Thank you for buying FeltArt



Let's start by unboxing your new Wall Art

3



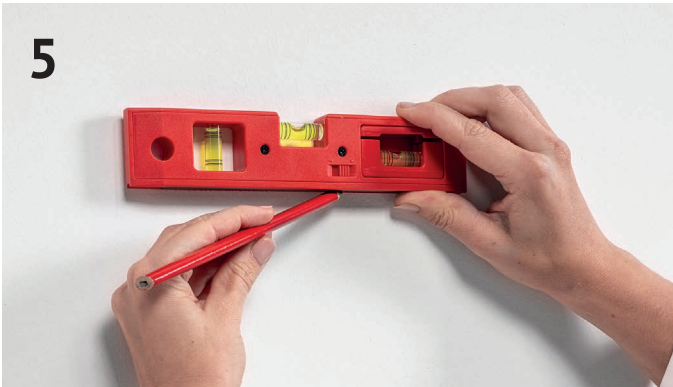
Enclosed with your Wall Art are double sided tape, screws and plugs

4



These extra items are needed for mounting your Wall Art

5



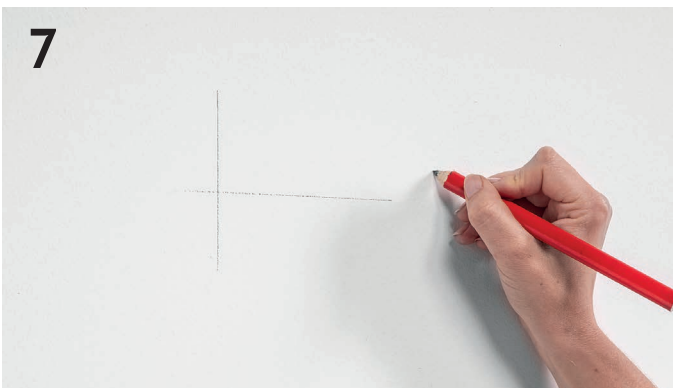
To position the hanging system first draw a horizontal line on the wall

6



Then draw a vertical line crossing the horizontal line to mark your starting point

7



You now created the starting position for the first felt spacer on the wall

8



Use the provided double sided tape (sheets) for the felt spacer



9
Position the double sided tape to the back of the felt spacer



10
Press firmly to stick the double sided tape to the felt spacer



11
Keep pressing firmly for a few seconds to create a super strong bonding (!)



12
Remove the sheet from the double sided tape



13
Place the felt spacer between the marked lines and press firmly



14
Now let's start positioning the felt spacers on the back of the Wall Art



15
Mark a dot 10 centimeter from the upper edge on the right side



16
Position your tape measure on the left side



17 Mark a dot 10 centimeter from the upper edge on the left side



18 Now position your tape measure level with the two marked dots



19 Mark the right position depending on size of the art work S/M/L (for details check the data sheet)



20 Mark the left position depending on size of the art work S/M/L (for details check the data sheet)



21 Check if the distance between the marked points is 20 centimeter (size of the felt spacer)



22 Use double sided tape (enclosed sheets) **check the data sheet first**



23 Position the double sided tape to the back of the felt spacer



24 Press firmly to stick the double sided tape to the felt spacer



Keep pressing firmly for a few seconds to create a super strong bonding (!)



Remove the sheet from the double sided tape



Place the felt spacer between the marked points and press firmly



Keep pressing firmly for a few seconds for a super strong bonding (!)



Repeat steps 22-28 to mount all felt spacers to the art work



Your FeltArt is now ready to hang on the wall, you can rotate and place in any position!



**FOR MORE TECHNICAL DETAILS AND MOUNTING TIPS
CHECK THE DATA SHEET ON OUR WEBSITE**

www.feltart.com/mountingset